

Joseph L. Fisona, Mayor

Board of Commissioners:

Charles H. Givens, Sr.

Charles E. Hicks V

Mary Jo Jablonski

Earl M. Piner, Sr.

Town Administrator:

Lewis H. George, Jr.

April 13, 2012

Donald A. Halligan, Director
Office of Planning and Capital Programming
Maryland Department of Transportation
7201 Corporate Center Drive
Hanover, MD 21076

Dear Mr. Halligan:

Pursuant to your December 28, 2011 letter on behalf of the Maryland Department of Transportation, the Town of Elkton has outlined the following priorities for inclusion in your final Consolidated Transportation Program.

1. Extension of MARC commuter rail to Elkton.
2. Improvements to the MD 213/US 40 intersection.
3. Construction of a pedestrian walkway over the Big Elk Creek along MD 7 (Delaware Avenue).

As requested I have attached the purpose and need criteria for each of the priorities.

Thank you for your time in reviewing the Town of Elkton priorities. Should you have any questions regarding these projects, please feel free to contact me.

Sincerely,

Joseph L. Fisona, Mayor
Town of Elkton

TOWN OF ELKTON

Elkton Municipal Building, 100 Railroad Avenue, P.O. Box 157, Elkton, Maryland 21922-0157
TELEPHONE: (410) 398-0970 FAX: (410) 398-0128 E-MAIL: building.zoning@elkton.org WEBSITE: www.elkton.org

Project Questionnaire: Annual Request to Maryland DOT for Project Funding

Please provide the following information for each major capital project priority identified

- 1) Name of Project: **Extension of MARC commuter rail to Elkton**
- 2) Submitting Jurisdiction: **Town of Elkton**
- 3) Location of the project (describe project limits and location, attach map if available and applicable): **Bow Street extended (the location of the former train station).**
- 4) Anticipated cost (approximate if available): **Not Available**
- 5) Description of project purpose and need (up to one paragraph): **Complete the NEPA study and develop preliminary engineering for this project.**
- 6) Is the project contained within the local Metropolitan Planning Organization's fiscally constrained long-range transportation plan? **Yes**
- 7) Is the project consistent with the local land use plans? **Yes** Describe specifics on how the project supports the local land use plan goals, objectives and/or policies: **The extension of MARC commuter rail service to Elkton will ensure long-term sustainability and continued economic growth in the downtown by providing public-transit opportunities for employment, health care services, education and shopping. This priority project supports the goals, objectives and policies of the following land use plans: Elkton's Comprehensive Plan, Elkton's Transit-Oriented Development Plan, Elkton's Downtown Master Plan, Cecil County BRAC Action Plan, and Elkton's Sustainable Community Plan. Linking MARC and SEPTA commuter rail connects the Town to Baltimore, Philadelphia, Washington, D.C. and other major cities along the Eastern seaboard - creating opportunities to attract rail-commuting workers and visitors to Elkton and providing residents with more transportation options. This is key to providing needed access to regional economic development including BRAC and the redevelopment Chrysler site.**
- 8) Please indicate which of the following Maryland Transportation Plan goals and objectives are served by the requested project investment (mark each goal served by the project and relevant objectives within each goal).

X **Goal: Quality of Service. Enhance users' access to, and positive experience with, all MDOT transportation services.**

X Objective: Enhance customer service and experience.

X Objective: Provide reliable and predictable travel time across modal options for people and goods.

X Objective: Facilitate coordination and collaboration with agency partners and stakeholders.

If checked, please describe how the project supports the goal and Objectives : **Extension of MARC commuter rail service will provide affordable transportation options to the elderly and lower income individuals in Elkton, and will enhance users' access to and positive experience with MDOT transportation services.**

X **Goal: Safety and Security: Provide transportation assets that maximize personal safety and security in all situations.**

X Objective: Reduce the number and rate of transportation related fatalities and injuries.

X Objective: Secure transportation assets for the movement of people and goods.

Objective: Coordinate and refine emergency response plans and activities.

If checked, please describe how the project supports the goal and objectives: **The extension of MARC commuter rail in this 20-mile rail service gap will help to reduce the number of passenger vehicles on the road and provide a safer, more comfortable transportation option for residents and employees in the region.**

Goal: System Preservation and Performance: Protect Maryland’s investment in its transportation system through strategies to preserve existing assets and maximize the efficient use of resources and infrastructure.

Objective: Preserve and maintain the existing transportation network.

Objective: Maximize operational performance and efficiency of existing systems.

If checked, please describe how the project supports the goal and Objectives: **The extension of MARC commuter rail in this area will help to reduce the number of passenger vehicles on the road and assist in alleviating traffic congestion on the main transportation arteries, thus preserving the capacity of the existing road network.**

Goal: Environmental Stewardship: Develop transportation policies and initiatives that protect the natural, community, and historic resources of the State and encourage development in areas that are best able to support growth.

Objective: Coordinate land use and transportation planning to better promote Smart Growth.

Objective: Preserve and enhance Maryland’s natural, community, and historic resources.

Objective: Support initiatives that further our commitments to environmental quality.

If checked, please describe how the project supports the goal and Objectives: **The extension of MARC commuter rail to Elkton will implement Smart Growth initiatives and protect natural resources by discouraging sprawl and encouraging development within the Town of Elkton and Cecil County’s Growth Corridor and Priority Funding Area.**

Goal: Connectivity for Daily life: Support continued economic growth in the State through strategic investments in a balance, multimodal transportation system.

Objective: Provide balance, seamless, and accessible multimodal transportation options for people and goods.

Objective: Facilitate linkages within and beyond Maryland to support a health economy.

Objective: Strategically expand network capacity to manage growth.

If checked, please describe how the project supports the goal and Objectives **The extension of MARC rail service to Elkton and Newark will link MARC and SEPTA commuter rail and will connect the Town to Baltimore, Philadelphia, Washington, D.C. and other major cities along the Eastern seaboard - creating opportunities to attract rail-commuting workers and visitors to Elkton and providing residents with more transportation options. This will trigger**

more investment and spur additional residential development in Elkton’s historic downtown area, and will ultimately drive implementation of Elkton’s Transit-Oriented Development Plan.

- 9) Additional Comments/Explanation: _____
- 10) Provide description of project location (also attach PDF or JPEG map of project location): _____



The Elkton Train Station



Google earth



Project Questionnaire: Annual Request to Maryland DOT for Project Funding

Please provide the following information for each major capital project priority identified

- 1) Name of Project: **Improve the MD 213/ US 40 intersection**
- 2) Submitting Jurisdiction: **Town of Elkton**
- 3) Location of the project (describe project limits and location, attach map if available and applicable): **the project location is at the MD 213/ US 40 intersection in Elkton**
- 4) Anticipated cost (approximate if available): **Not Available**
- 5) Description of project purpose and need (up to one paragraph): **To correct a congested major intersection within the heart of Elkton, Cecil County.**
- 6) Is the project contained within the local Metropolitan Planning Organization's fiscally constrained long-range transportation plan? **Yes**
- 7) Is the project consistent with the local land use plans? **Yes** Describe specifics on how the project supports the local land use plan goals, objectives and/or policies: **Intersection improvements are needed at US 40/ MD 213 to reduce traffic congestion at a key crossroad in Elkton. This project is necessary to correct a potential barrier to development in the Town and enhance Elkton's livability. The improvement of this intersection has been identified as a goal in Elkton's Comprehensive Plan and Elkton's Sustainable Community Plan.**
- 8) Please indicate which of the following Maryland Transportation Plan goals and objectives are served by the requested project investment (mark each goal served by the project and relevant objectives within each goal).

X **Goal: Quality of Service. Enhance users' access to, and positive experience with, all MDOT transportation services.**

X Objective: Enhance customer service and experience.

X Objective: Provide reliable and predictable travel time across modal options for people and goods.

X Objective: Facilitate coordination and collaboration with agency partners and stakeholders.

If checked, please describe how the project supports the goal and Objectives:

Our first categorical priority under Transportation in Table 12.1 Plan Implementation in Elkton's Comprehensive Plan is to work with Cecil County and the State to begin planning for road improvements, of which the US 40/ MD 213 intersection is one of the top priorities within that category. US 40 and I-95 actually serve as the spine of our network, they play a key role in the statewide and regional congestion management systems, and US 40 provides critical system redundancy to I-95 through the County. What's more, US 40 helps provide access to the entire Eastern Shore (via MD 213), and, therefore, US 40/ MD 213 intersection is second in importance to access to the Eastern Shore in Maryland only to the Bay Bridge. Current travel delays raise environmental justice issues in the Town of Elkton and economic sustainability issues on the Shore. In addition, Cecil County's BRAC Action Plan identifies the need to upgrade the Route 40/213 intersection.

Goal: Safety and Security: Provide transportation assets that maximize personal safety and security in all situations.

Objective: Reduce the number and rate of transportation related fatalities and injuries.

Objective: Secure transportation assets for the movement of people and goods.

Objective: Coordinate and refine emergency response plans and activities.

If checked, please describe how the project supports the goal and objectives: **Mitigating congestion at the US 40/ MD 213 intersection would enhance customer mobility, safety and security.**

Goal: System Preservation and Performance: Protect Maryland’s investment in its transportation system through strategies to preserve existing assets and maximize the efficient use of resources and infrastructure.

Objective: Preserve and maintain the existing transportation network.

Objective: Maximize operational performance and efficiency of existing systems.

If checked, please describe how the project supports the goal and Objectives: **Improvements to this congested intersection are necessary to move traffic in a safe, efficient manner.**

Goal: Environmental Stewardship: Develop transportation policies and initiatives that protect the natural, community, and historic resources of the State and encourage development in areas that are best able to support growth.

Objective: Coordinate land use and transportation planning to better promote Smart Growth.

Objective: Preserve and enhance Maryland’s natural, community, and historic resources.

Objective: Support initiatives that further our commitments to environmental quality.

If checked, please describe how the project supports the goal and Objectives _____

Goal: Connectivity for Daily life: Support continued economic growth in the State through strategic investments in a balance, multimodal transportation system.

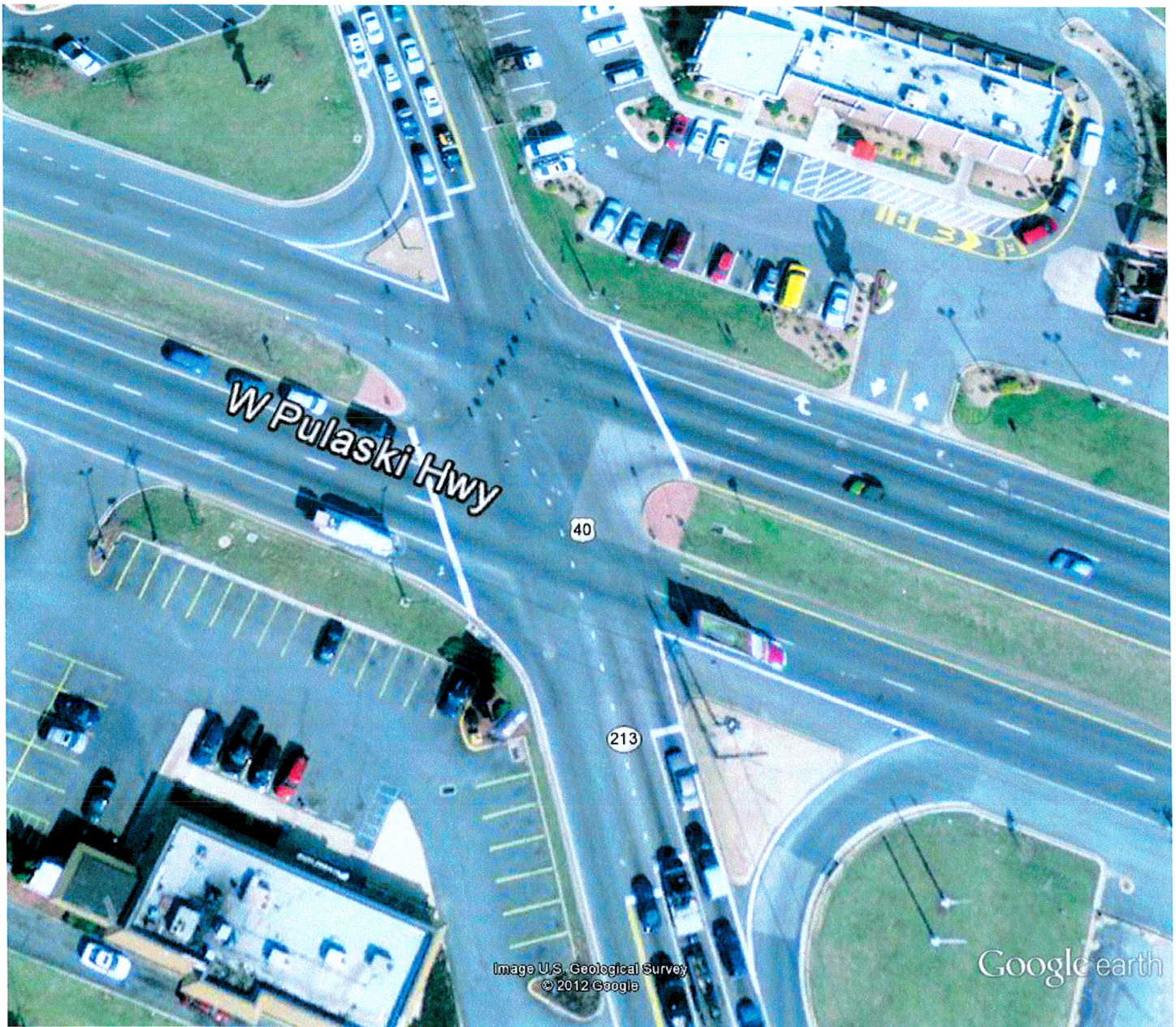
Objective: Provide balance, seamless, and accessible multimodal transportation options for people and goods.

Objective: Facilitate linkages within and beyond Maryland to support a health economy.

Objective: Strategically expand network capacity to manage growth.

If checked, please describe how the project supports the goal and Objectives _____

- 9) Additional Comments/Explanation: _____
- 10) Provide description of project location (also attach PDF or JPEG map of project location): _____



Google earth

feet
meters

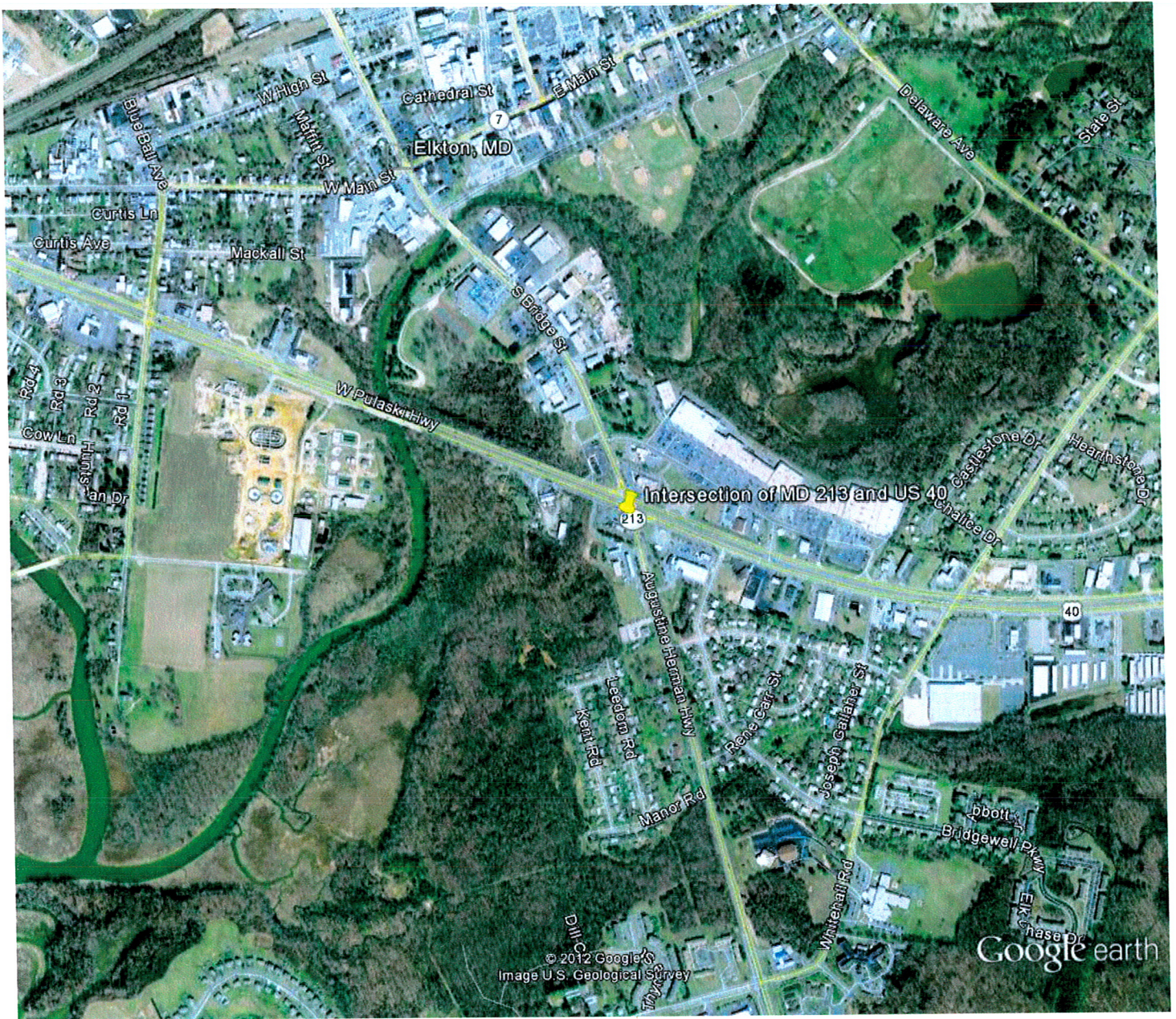


100



50





Google earth



Project Questionnaire: Annual Request to Maryland DOT for Project Funding

Please provide the following information for each major capital project priority identified

- 1) Name of Project: **Pedestrian walkway on Delaware Avenue over the Big Elk Creek (MD 7)**
- 2) Submitting Jurisdiction: **Town of Elkton**
- 3) Location of the project (describe project limits and location, attach map if available and applicable): **Delaware Avenue (MD 7) at the bridge over the Big Elk Creek.**
- 4) Anticipated cost (approximate if available): **Not Available**
- 5) Description of project purpose and need (up to one paragraph): **Construction of a pedestrian walkway at the location of the Delaware Avenue bridge over the Big Elk Creek. Pedestrian access to the heavily-used Meadow Park is limited, due to lack of sidewalks on MD 9. It is especially dangerous for pedestrians to cross the bridge, as the narrow roadway does not allow enough room for both pedestrians and vehicles.**
- 6) Is the project contained within the local Metropolitan Planning Organization's fiscally constrained long-range transportation plan?
- 7) Is the project consistent with the local land use plans? **Yes** Describe specifics on how the project supports the local land use plan goals, objectives and/or policies: **This project is consistent with Elkton's Comprehensive Plan.**
- 8) Please indicate which of the following Maryland Transportation Plan goals and objectives are served by the requested project investment (mark each goal served by the project and relevant objectives within each goal).

Goal: Quality of Service. Enhance users' access to, and positive experience with, all MDOT transportation services.

Objective: Enhance customer service and experience.

Objective: Provide reliable and predictable travel time across modal options for people and goods.

Objective: Facilitate coordination and collaboration with agency partners and stakeholders.

If checked, please describe how the project supports the goal and Objectives: **The installation of safe pedestrian access to Elkton's most heavily-used park will create a positive experience for those citizens walking along this roadway.**

Goal: Safety and Security: Provide transportation assets that maximize personal safety and security in all situations.

Objective: Reduce the number and rate of transportation related fatalities and injuries.

Objective: Secure transportation assets for the movement of people and goods.

Objective: Coordinate and refine emergency response plans and activities.

If checked, please describe how the project supports the goal and objectives:

Goal: System Preservation and Performance: Protect Maryland's investment in its transportation system through strategies to preserve existing assets and maximize the efficient use of resources and infrastructure.

Objective: Preserve and maintain the existing transportation network.

Objective: Maximize operational performance and efficiency of existing systems.

If checked, please describe how the project supports the goal and Objectives: **The State recently made improvements to this roadway in order to alleviate the effects of intermittent flooding. Pedestrian access across the Big Elk Creek on MD 7 (Delaware Avenue), will help to maximize the efficient use existing infrastructure.**

Goal: Environmental Stewardship: Develop transportation policies and initiatives that protect the natural, community, and historic resources of the State and encourage development in areas that are best able to support growth.

Objective: Coordinate land use and transportation planning to better promote Smart Growth.

Objective: Preserve and enhance Maryland’s natural, community, and historic resources.

Objective: Support initiatives that further our commitments to environmental quality.

If checked, please describe how the project supports the goal and Objectives: **This project will provide a safe pedestrian access along Delaware Avenue across the Big Elk Creek. A safer walkway will encourage more walking for exercise and help to reduce the number of trips by automobile.**

Goal: Connectivity for Daily life: Support continued economic growth in the State through strategic investments in a balance, multimodal transportation system.

Objective: Provide balance, seamless, and accessible multimodal transportation options for people and goods.

Objective: Facilitate linkages within and beyond Maryland to support a health economy.

Objective: Strategically expand network capacity to manage growth.

If checked, please describe how the project supports the goal and Objectives: **This project supports the goal of a balanced, multi-modal transportation system by providing a safer environment for walking.**

9) Additional Comments/Explanation: _____

10) Provide description of project location (also attach PDF or JPEG map of project location): _____





Delaware Avenue bridge over the Big Elk Creek

© 2012 Google
Image U.S. Geological Survey

Google earth

Google earth

