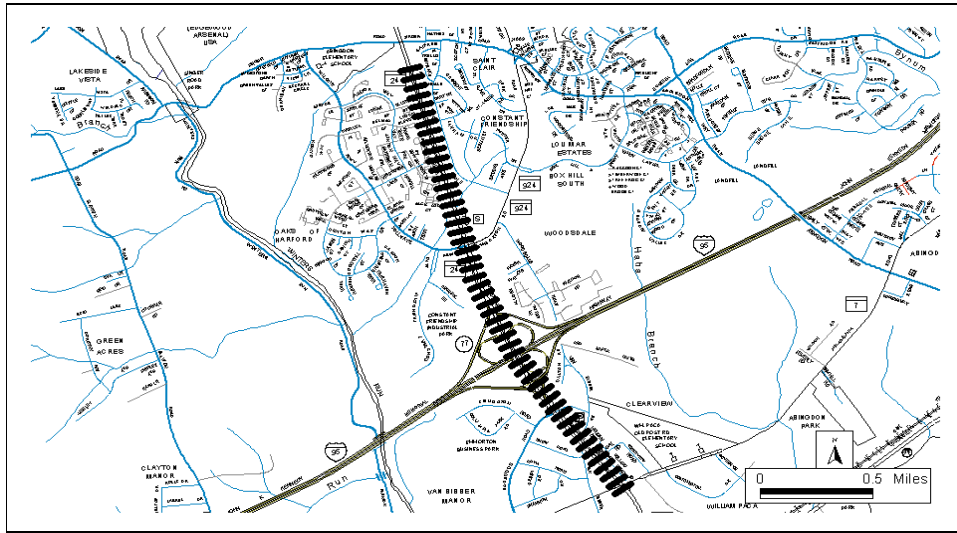




Harford



PROJECT: MD 24, Vietnam Veterans Memorial Highway

DESCRIPTION: Construct improvements to the I-95/MD 24 interchange, including upgrades to MD 24 and the reconstruction of the MD 24/MD 924 intersection to a grade-separated interchange. Phase 1 includes minor improvements to the I-95/MD 24 interchange and a grade-separated interchange at the MD24/MD 924 intersection. Future phases will be further investigated as part of the I-95 Section 200 project planning study. (BRAC Related)

JUSTIFICATION: This project would provide improved capacity, operation and safety for the I-95/MD 24 interchange and the MD 24/MD 924/Tollgate Road intersection, which is in close proximity and integral to the I-95/MD 24 interchange operation.

SMART GROWTH STATUS:

- Project Not Location Specific or Location Not Determined
- Project Within PFA
- Grandfathered
- Project Outside PFA; Subject to Exception
- Exception Approved by BPW/MDOT

ASSOCIATED IMPROVEMENTS:

- I-95, Section 200 (MdTA) - Development & Evaluation Program
- I-95, Interchange at MD 24 (MdTA)
- BRAC Intersection Improvements at APG (Statewide Line 7)

Federal Funding By Year of Obligation						
PHASE	FFY 2010	FFY 2011	FFY 2012	FFY 2013	FFY 2014 - 2015	FEDERAL CATEGORY
PP	0	0	0	0	0	----
PE	0	0	0	0	0	----
RW	0	0	0	0	0	----
CO	0	0	0	0	0	----

STATUS: Construction underway. The Authority is funding Engineering, Right-of-way and Construction (the costs for those phases are shown in the Authority's program). Cost shown is SHA share only.

SIGNIFICANT CHANGE FROM FY 2009 - 14 CTP: None.

PHASE	TOTAL		PROJECT CASH FLOW							SIX YEAR TOTAL	BALANCE TO COMPLETE
	ESTIMATED COST (\$000)	EXPEND THRU 2009	CURRENT YEAR 2010	BUDGET YEAR 2011	FOR PLANNING PURPOSES ONLY						
				2012.....2013.....2014.....2015.....			
Planning	1,551	1,551	0	0	0	0	0	0	0	0	0
Engineering	85	85	0	0	0	0	0	0	0	0	0
Right-of-way	1	1	0	0	0	0	0	0	0	0	0
Construction	0	0	0	0	0	0	0	0	0	0	0
Total	1,637	1,637	0	0	0	0	0	0	0	0	0
Federal-Aid	1,086	1,086	0	0	0	0	0	0	0	0	0

FUNCTION :

STATE - Intermediate Arterial

FEDERAL - Expressway

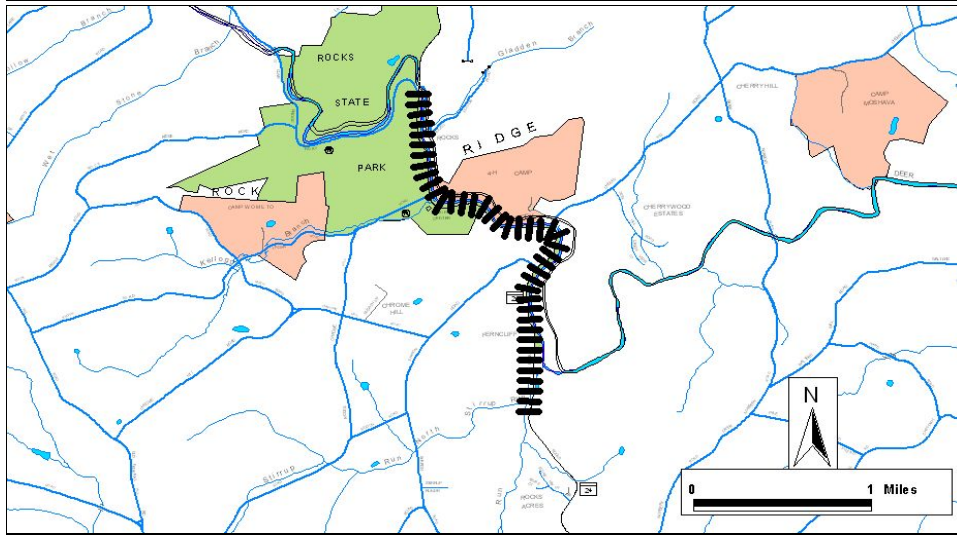
STATE SYSTEM: Primary

DAILY TRAFFIC : (USAGE IMPACTS)

CURRENT (2009) - 68,900

PROJECTED (2030) - 114,500

OPERATING COST IMPACT: N/A



PROJECT: MD 24, Rocks Road

DESCRIPTION: MD 24 will be reconstructed, with slopes repaired and guardrail replaced from South of Sharon Road to North of Stirrup Run Culvert.

JUSTIFICATION: This project will provide safety improvements and improve traffic operations.

SMART GROWTH STATUS:

- Project Not Location Specific or Location Not Determined
- Project Within PFA
- Grandfathered
- Project Outside PFA; Subject to Exception
- Exception Approved by BPW/MDOT

ASSOCIATED IMPROVEMENTS:

Federal Funding By Year of Obligation						
PHASE	FFY 2010	FFY 2011	FFY 2012	FFY 2013	FFY 2014 - 2015	FEDERAL CATEGORY
PP	0	0	0	0	0	----
PE	0	0	0	0	0	----
RW	0	0	0	0	0	----
CO	0	5266	0	0	0	STP

STATUS: Engineering and Right-of-Way underway. Construction to begin during budget fiscal year. The project will be advertised under two contracts.

SIGNIFICANT CHANGE FROM FY 2009 - 14 CTP: None.

PHASE	POTENTIAL FUNDING SOURCE:									
	<input checked="" type="checkbox"/> SPECIAL <input checked="" type="checkbox"/> FEDERAL <input type="checkbox"/> GENERAL <input type="checkbox"/> OTHER									
	PROJECT CASH FLOW									
TOTAL ESTIMATED COST (\$000)	EXPEND THRU 2009	CURRENT YEAR 2010	BUDGET YEAR 2011	FOR PLANNING PURPOSES ONLY					SIX YEAR TOTAL	BALANCE TO COMPLETE
			2012.....2013.....2014.....2015.....			
Planning	0	0	0	0	0	0	0	0	0	
Engineering	1,300	597	603	100	0	0	0	0	703	
Right-of-way	235	0	235	0	0	0	0	0	235	
Construction	7,396	0	0	2,627	3,588	1,181	0	0	7,396	
Total	8,931	597	838	2,727	3,588	1,181	0	0	8,334	
Federal-Aid	4,266	0	0	546	2,799	921	0	0	4,266	

FUNCTION :

STATE - Major Collector

FEDERAL - Major Collector

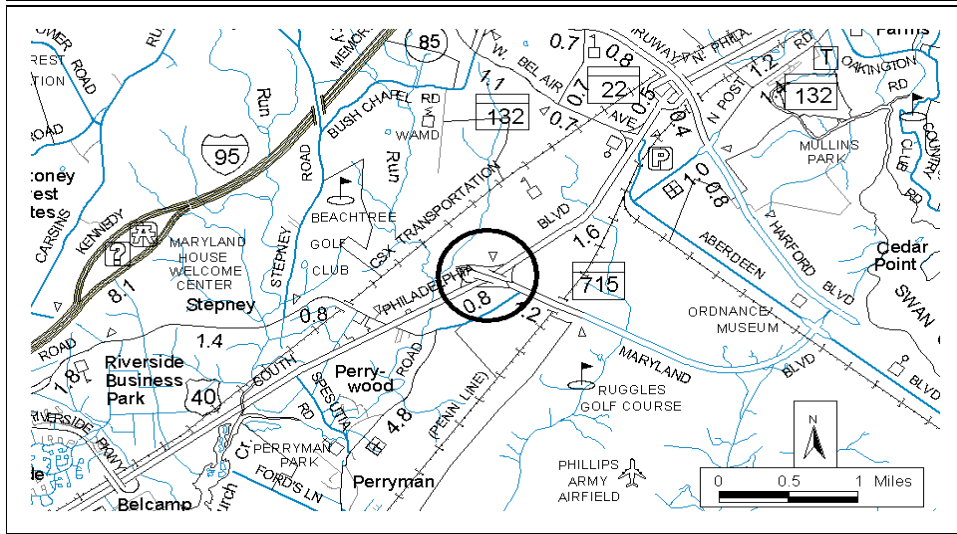
STATE SYSTEM: Secondary

DAILY TRAFFIC : (USAGE IMPACTS)

CURRENT (2009) - 4,000

PROJECTED (2030) - 7,750

OPERATING COST IMPACT: N/A



PROJECT: US 40, Pulaski Highway

DESCRIPTION: Construct interchange improvements to address operational issues at MD 715. (BRAC Related)

JUSTIFICATION: This project will improve safety and operations along US 40. It will also improve access to the town of Aberdeen, Aberdeen Proving Grounds and industrial parks in the area.

SMART GROWTH STATUS:

- Project Not Location Specific or Location Not Determined
- Project Within PFA
- Grandfathered
- Project Outside PFA; Subject to Exception
- Exception Approved by BPW/MDOT

ASSOCIATED IMPROVEMENTS:

Perryman Access Study (Line 4)
BRAC Intersection Improvements at APG (Statewide Line 7)

Federal Funding By Year of Obligation						
PHASE	FFY 2010	FFY 2011	FFY 2012	FFY 2013	FFY 2014 - 2015	FEDERAL CATEGORY
PP	0	0	0	0	0	----
PE	0	0	0	0	0	----
RW	9022	0	0	0	0	PLH/STP/TC
CO	0	31915	0	0	0	HP/STP/TC

STATUS: Engineering underway. Right-of-way to begin during current fiscal year and Construction to begin during budget fiscal year.

SIGNIFICANT CHANGE FROM FY 2009 - 14 CTP: Moved from the Development and Evaluation program to the Construction Program .

PHASE	TOTAL		PROJECT CASH FLOW							SIX YEAR TOTAL	BALANCE TO COMPLETE
	ESTIMATED COST (\$000)	EXPEND THRU 2009	CURRENT YEAR 2010	BUDGET YEAR 2011	FOR PLANNING PURPOSES ONLY						
					2012	2013	2014	2015			
Planning	0	0	0	0	0	0	0	0	0	0	0
Engineering	2,538	574	1,864	100	0	0	0	0	0	1,964	0
Right-of-way	9,022	0	4,511	4,511	0	0	0	0	0	9,022	0
Construction	31,915	0	27	7,740	16,150	7,998	0	0	0	31,915	0
Total	43,475	574	6,402	12,351	16,150	7,998	0	0	0	42,901	0
Federal-Aid	40,937	0	4,538	12,251	16,150	7,998	0	0	0	40,937	0

FUNCTION :

STATE - Intermediate Arterial
FEDERAL - Other Principal Arterial

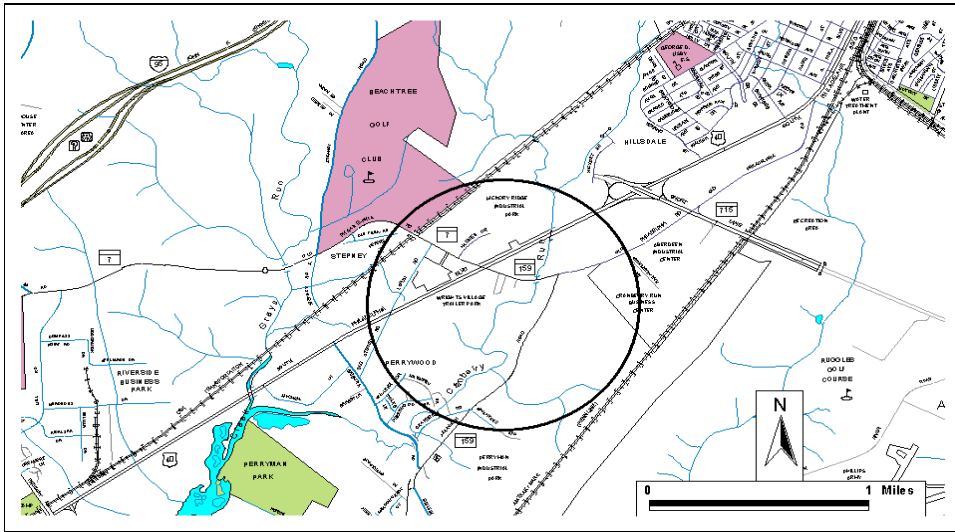
STATE SYSTEM: Secondary

DAILY TRAFFIC : (USAGE IMPACTS)

CURRENT (2009) - 35,200

PROJECTED (2030) - 75,300

OPERATING COST IMPACT: \$15,000 per year



PROJECT: Perryman Access Study

DESCRIPTION: Study to provide improved access from the Perryman Peninsula to the state road network. Sidewalks will be provided where appropriate. Shoulders will accommodate bicycles. (BRAC Related)

JUSTIFICATION: This project would improve access to the planned growth area of the Perryman Peninsula and improve the safety and operation of the area road network. This project includes the transfer of MD 159 to the County after construction.

SMART GROWTH STATUS:

- Project Not Location Specific or Location Not Determined
- Project Within PFA
- Grandfathered
- Project Outside PFA; Subject to Exception
- Exception Approved by BPW/MDOT

ASSOCIATED IMPROVEMENTS:

US 40, Interchange at MD 715 (Line 3)
BRAC Intersection Improvements at APG (Statewide Line 7)

Federal Funding By Year of Obligation						
PHASE	FFY 2010	FFY 2011	FFY 2012	FFY 2013	FFY 2014 - 2015	FEDERAL CATEGORY
PP	0	0	0	0	0	----
PE	0	0	0	0	0	----
RW	0	0	0	0	0	----
CO	0	0	0	0	0	----

STATUS: Engineering underway.

SIGNIFICANT CHANGE FROM FY 2009 - 14 CTP: None.

PHASE	TOTAL		PROJECT CASH FLOW							SIX YEAR TOTAL	BALANCE TO COMPLETE
	ESTIMATED COST (\$000)	EXPEND THRU 2009	CURRENT YEAR 2010	BUDGET YEAR 2011	FOR PLANNING PURPOSES ONLY						
				2012.....2013.....2014.....2015.....			
Planning	247	247	0	0	0	0	0	0	0	0	0
Engineering	200	0	100	100	0	0	0	0	0	200	0
Right-of-way	0	0	0	0	0	0	0	0	0	0	0
Construction	0	0	0	0	0	0	0	0	0	0	0
Total	447	247	100	100	0	0	0	0	0	200	0
Federal-Aid	173	173	0	0	0	0	0	0	0	0	0

FUNCTION :

STATE - Major Collector

FEDERAL - Major Collector

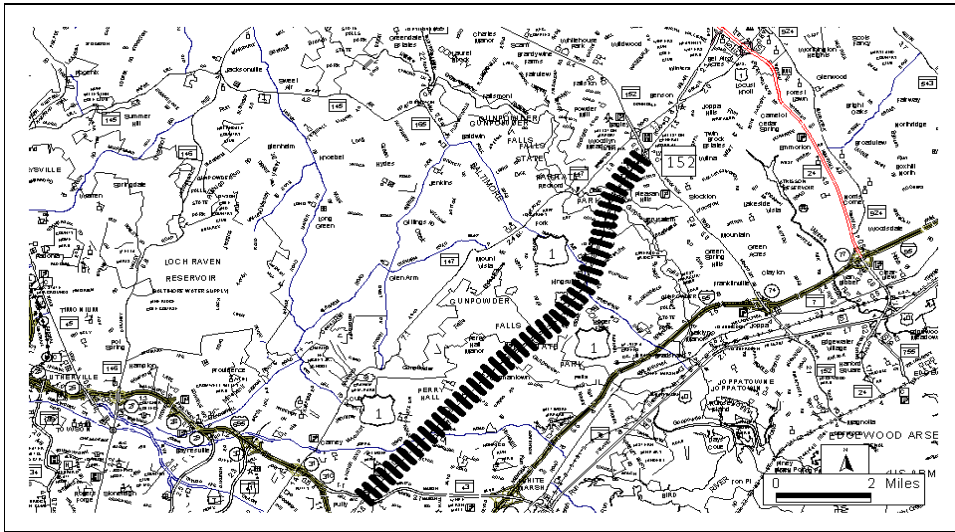
STATE SYSTEM: Secondary

DAILY TRAFFIC : (USAGE IMPACTS)

CURRENT (2009) - 6,600

PROJECTED (2030) - 18,200

OPERATING COST IMPACT: N/A



PROJECT: US 1, Belair Road

DESCRIPTION: Study to reconstruct US 1 from MD 43 to MD 152 (8.46 miles). Sidewalks will be included where appropriate. Wide outside curb lanes will accommodate bicycles.

JUSTIFICATION: This improvement would relieve congestion and improve safety and traffic operations on US 1. This project would also provide capacity for the planned residential and commercial development along US 1.

SMART GROWTH STATUS:

- Project Not Location Specific or Location Not Determined
- Project Within PFA
- Grandfathered
- Project Outside PFA; Subject to Exception
- Exception Approved by BPW/MDOT

ASSOCIATED IMPROVEMENTS:
US 1, MD 152 to Hickory Bypass (Line 6)

Federal Funding By Year of Obligation						
PHASE	FFY 2010	FFY 2011	FFY 2012	FFY 2013	FFY 2014 - 2015	FEDERAL CATEGORY
PP	0	0	0	0	0	----
PE	0	0	0	0	0	----
RW	0	0	0	0	0	----
CO	0	0	0	0	0	----

STATUS: Project Planning complete.

SIGNIFICANT CHANGE FROM FY 2009 - 14 CTP: None.

PHASE	TOTAL		PROJECT CASH FLOW							SIX YEAR TOTAL	BALANCE TO COMPLETE
	ESTIMATED COST (\$000)	EXPEND THRU 2009	CURRENT YEAR 2010	BUDGET YEAR 2011	FOR PLANNING PURPOSES ONLY						
				2012.....2013.....2014.....2015.....			
Planning	0	0	0	0	0	0	0	0	0	0	0
Engineering	0	0	0	0	0	0	0	0	0	0	0
Right-of-way	1,202	1,202	0	0	0	0	0	0	0	0	0
Construction	0	0	0	0	0	0	0	0	0	0	0
Total	1,202	1,202	0	0	0	0	0	0	0	0	0
Federal-Aid	0	0	0	0	0	0	0	0	0	0	0

FUNCTION :

STATE - Intermediate Arterial
FEDERAL - Other Principal Arterial

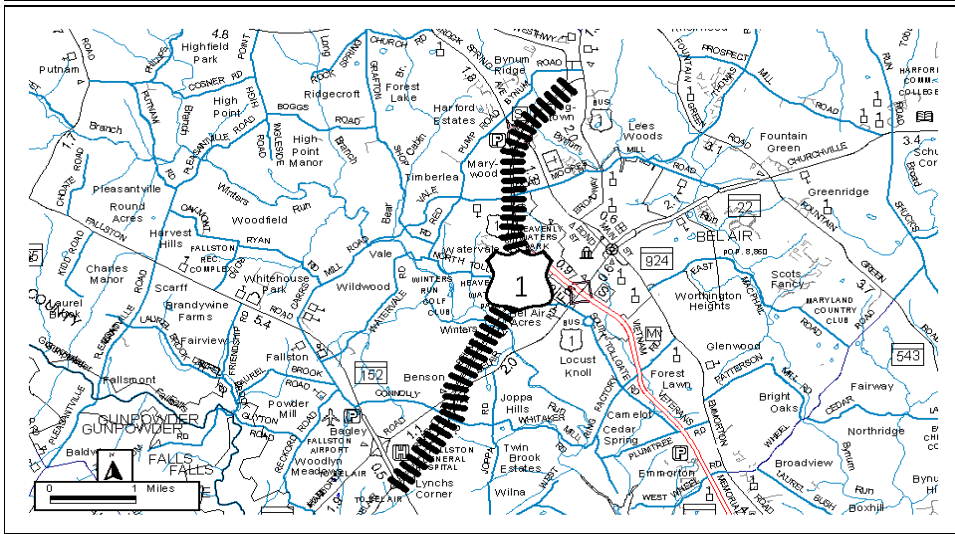
STATE SYSTEM : Secondary

DAILY TRAFFIC : (USAGE IMPACTS)

CURRENT (2009) - 36,800

PROJECTED (2030) - 45,100

OPERATING COST IMPACT: N/A



PROJECT: US 1, Belair Road

DESCRIPTION: Study to reconstruct US 1 to a multi-lane highway from MD 152 to the Hickory Bypass (5.50 miles). Sidewalks will be included where appropriate. Shoulders will accommodate bicycles.

JUSTIFICATION: This project would improve the safety and operational characteristics of US 1.

SMART GROWTH STATUS:

- Project Not Location Specific or Location Not Determined
- Project Within PFA
- Grandfathered
- Project Outside PFA; Subject to Exception
- Exception Approved by BPW/MDOT

ASSOCIATED IMPROVEMENTS:
US 1, MD 43 to MD 152 (Line 5)

Federal Funding By Year of Obligation						
PHASE	FFY 2010	FFY 2011	FFY 2012	FFY 2013	FFY 2014 - 2015	FEDERAL CATEGORY
PP	0	0	0	0	0	----
PE	0	0	0	0	0	----
RW	0	0	0	0	0	----
CO	0	0	0	0	0	----

STATUS: Project Planning complete.

SIGNIFICANT CHANGE FROM FY 2009 - 14 CTP: None.

PHASE	TOTAL ESTIMATED COST (\$000)		PROJECT CASH FLOW							SIX YEAR TOTAL	BALANCE TO COMPLETE
	ESTIMATED COST (\$000)	EXPEND THRU 2009	CURRENT YEAR 2010	BUDGET YEAR 2011	FOR PLANNING PURPOSES ONLY						
					2012	2013	2014	2015			
Planning	2,269	2,269	0	0	0	0	0	0	0	0	0
Engineering	0	0	0	0	0	0	0	0	0	0	0
Right-of-way	286	286	0	0	0	0	0	0	0	0	0
Construction	0	0	0	0	0	0	0	0	0	0	0
Total	2,555	2,555	0	0	0	0	0	0	0	0	0
Federal-Aid	1,588	1,588	0	0	0	0	0	0	0	0	0

FUNCTION :

STATE - Intermediate Arterial
FEDERAL - Freeway / Expressway

STATE SYSTEM: Secondary

DAILY TRAFFIC : (USAGE IMPACTS)

CURRENT (2009) - 38,100

PROJECTED (2030) - 54,100

OPERATING COST IMPACT: N/A

SAFETY, CONGESTION RELIEF, HIGHWAY AND BRIDGE PRESERVATION PROGRAM

STATE HIGHWAY ADMINISTRATION -- HARFORD COUNTY LINE 7

ITEM NO.	ROUTE NO.	DESCRIPTION AND IMPROVEMENT TYPE	TOTAL ESTIMATED COST (\$000's)	CONSTRUCTION START Status as of December 1, 2009
<u>Fiscal Year 2009 Completions</u>				
<u>Sidewalks</u>				
1	MD 924	Main Street; Broadway to Maulsby Avenue; retrofit sidewalk - 245 linear feet	16	Completed
2	MD 924	Emmorton Road; Holly Wreath Drive to Holly Wreath Court; retrofit sidewalk - 65 linear feet	35	Completed
<u>Fiscal Years 2010 and 2011</u>				
<u>Resurface/Rehabilitate</u>				
3	US 1 Bus	Belair Road; US 1 Bypass to Broadway; patching (ARRA PROJECT)	200	FY 2010
4	MD 7	Old Philadelphia Road; MD 136 to MD 543; patching (ARRA PROJECT)	200	FY 2010
5	MD 22	Churchville Road; MD 155 to Technology Drive; resurfacing (ARRA PROJECT)	1,800	FY 2010
6	US 40	Pulaski Highway; MD 7 to MD 132; resurfacing (ARRA PROJECT)	1,780	FY 2010
7	MD 132	W. Belair Avenue; Beards Hill Road to MD 462; resurface	1,528	Under construction
8	MD 147	Harford Road; Baltimore County Line to MD 152; resurfacing (ARRA PROJECT)	700	Under construction
9	MD 462	Paradise Road; MD 132 to Carsins Run; resurfacing (ARRA Project)	1,190	FY 2010
10	MD 543	Fountain Green Road; Wheel Road to MD 22; resurface (ARRA PROJECT)	1,227	Under construction
11	MD 922	Churchville Road; Bond Street to US 1 Business; resurfacing (ARRA PROJECT)	100	FY 2010

SAFETY, CONGESTION RELIEF, HIGHWAY AND BRIDGE PRESERVATION PROGRAM

STATE HIGHWAY ADMINISTRATION -- HARFORD COUNTY LINE 7 (cont'd)

ITEM NO.	ROUTE NO.	DESCRIPTION AND IMPROVEMENT TYPE	TOTAL ESTIMATED COST (\$000's)	CONSTRUCTION START Status as of December 1, 2009
<u>Fiscal Years 2010 and 2011 (cont'd)</u>				
<u>Safety/Spot Improvement</u>				
12	US 1	Belair Bypass; MD 24 to south of MD 924; install median traffic barrier and resurfacing (Funded for PE only)	400	PE Underway
13	US 1	Belair Road; south of Connolly Road/Whitaker Mill Road to north of MD 147/US 1 Business; widen each intersection to provide separate left turn lanes and widen to provide a continuous center-turning lane in between	2,223	Completed
14	US 1 Bus	Belair Bypass; Tollgate Road to MD 924; ADA improvements (ARRA PROJECT) (Cost shown is total for District 4 for ADA Compliance)	2,624	FY 2010
15	MD 7A	Union Avenue South; MD 490 to Warren Road; ADA improvements (ARRA PROJECT) (Cost shown is total for District 4 for ADA Compliance)	2,624	FY 2010
16	MD 22	Aberdeen Thruway; at Mt. Royal Avenue; ADA improvements (ARRA PROJECT) (Cost shown is total for District 4 for ADA Compliance)	2,624	FY 2010
17	MD 22	Aberdeen Thruway; at Middleton Road; ADA improvements (ARRA PROJECT) (Cost shown is total for District 4 for ADA Compliance)	2,624	FY 2010
18	MD 24	Vietnam Veterans Memorial Highway; Marketplace Drive to Boulton Street; ADA improvements (ARRA PROJECT) (Cost shown is total for District 4 for ADA Compliance)	2,624	FY 2010
19	MD 24	Rock Spring Avenue; Bynum Road to Myers Drive; ADA improvements (ARRA PROJECT) (Cost shown is total for District 4 for ADA Compliance)	2,624	FY 2010
20	US 40	North Philadelphia Boulevard; James Avenue to MD 22 on-ramp; ADA improvements (ARRA PROJECT) (Cost shown is total for District 4 for ADA Compliance)	2,624	FY 2010
21	MD 490	South Union Avenue; Alliance Street to MD 7A; ADA improvements (ARRA PROJECT) (Cost shown is total for District 4 for ADA Compliance)	2,624	FY 2010

SAFETY, CONGESTION RELIEF, HIGHWAY AND BRIDGE PRESERVATION PROGRAM

STATE HIGHWAY ADMINISTRATION -- HARFORD COUNTY LINE 7 (cont'd)

ITEM NO.	ROUTE NO.	DESCRIPTION AND IMPROVEMENT TYPE	TOTAL ESTIMATED COST (\$000's)	CONSTRUCTION START Status as of December 1, 2009
		<u>Fiscal Years 2010 and 2011 (cont'd)</u>		
		<u>Safety/Spot Improvement (cont'd)</u>		
22	MD 924	Emmorton Road; Woodsdale Road to south of St. Clair Road; provide center turn lane, resurface and safety	1,854	Under construction
		<u>Community Safety and Enhancements</u>		
23	MD 755	Edgewood Road; Phase I - MD 24 to Willoughby Beach Road in Edgewood; streetscape	3,961	Under construction
		<u>Sidewalks</u>		
24	MD 24	Vietnam Veterans Memorial Highway; at Edgewood Road; sidewalk and ADA improvements	11	Completed
25	US 40	Pulaski Highway; at Bata Boulevard; sidewalk retrofit - 80 linear feet	40	Under construction
		<u>Intersection Capacity Improvements</u>		
26	MD 155	Level Road; at MD 462; construct roundabout (Funded for preliminary engineering only)	507	PE Underway
		<u>Congressional Earmarks</u>		
27		Edgewood; Train station streetscaping and parking improvements (Earmark \$1.5 million; PE, CO) Sponsor: Maryland Transit Administration	0	